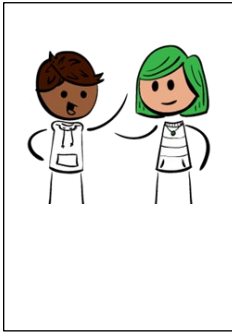


REC: Leicester Central Study ID: REC Reference Number: 269159 V.4
20.4.22

Easy-read Participant Information Sheet



1. What is this study about?

This study will help us make a new picture book to help doctors and nurses talk to people who have a learning disability and Long-Covid to find out what health care they need.



2. Who can take part?

People who have a learning disability and live in Hertfordshire who have, or recently had, Long-Covid.

People aged 18 or over



3. What will I do if I take part?

We would meet 2 times.

- First, we would talk about the study and I would answer any questions. This will take 30 minutes. I can telephone you or videocall you.
- Second, we would talk about what life was like when you had Long-Covid. This talk would take about 1 hour on the telephone or video call.

4. Do I have to take part?

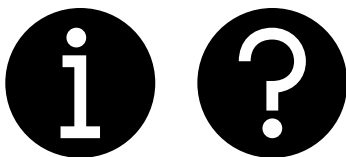


No. You do not have to do this study. It is your choice. Taking part, or not, will not change the support you get from the Learning Disability team or any other services.



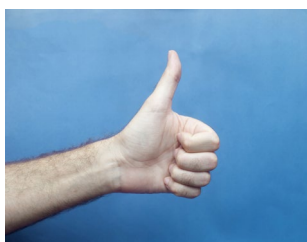
5. Can I change my mind?

- Yes. You can change your mind at any time when we talk. We will stop talking. You do not have to tell me why you want to stop.



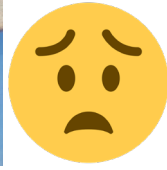
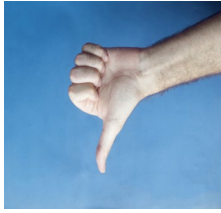
6. What happens to my information?

- Your information will be kept private and safe. What we talk about will be recorded. It will then be written down. It will not have your name on it. If I think you, or someone else is not safe I will have to tell other people about this.



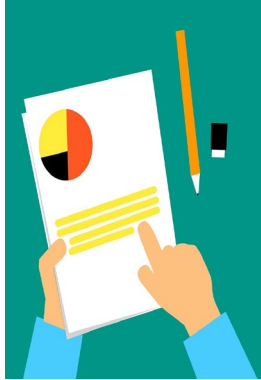
7. Good things about taking part?

- Talking about the coronavirus book can help you understand why the vaccine is needed.
- You will get a £10 voucher at the end.



8. Risks when taking part?

- Some people may feel upset. Tell me if you feel upset. We can stop. I can support you to get more help if you feel very upset.



6. What will you do with the results?

- I will write about the results. I will send this to the University of Hertfordshire. I will send it to a journal so other people can read about it. A journal is like a magazine.
- I will present the results in meetings. I can call you to talk about the results or I can send you a written copy.



10. What if there is a problem?

- If you are not happy at any time please tell me. You can also email Rosemary Godbold as a person not linked to the research to talk more. Her email is r.godbold@herts.ac.uk. If you are still not happy, you can ask to talk to the University Registrar: Sharon Harrison-Barker: s.harrison-barker@herts.ac.uk. University of Hertfordshire, College Lane, Hatfield AL109AB. You can also talk to PALS at Hertfordshire Partnership Foundation NHS Trust on 01707 253916 or email: hpft.pals@nhs.net



11. Who is sponsoring this study?

- The University of Hertfordshire. The Research Ethics Committee will also check this study. They are a group of people who make sure studies are run well.

Contact details/address:



Professor Natalie Pattison or Dr Rajnish Attavar (study leads)

- Natalie is at University of Hertfordshire, College Lane, Hatfield, AL109AB. Email: n.pattison@herts.ac.uk. Phone: 07543220056



- Rajnish is at Hertfordshire Partnership Foundation NHS Trust. Email: t.glover1@nhs.net (secretary)



- Dr. Helena Wythe, Researcher
- Email: h.f.wythe@herts.ac.uk
- Telephone: 07790566474

